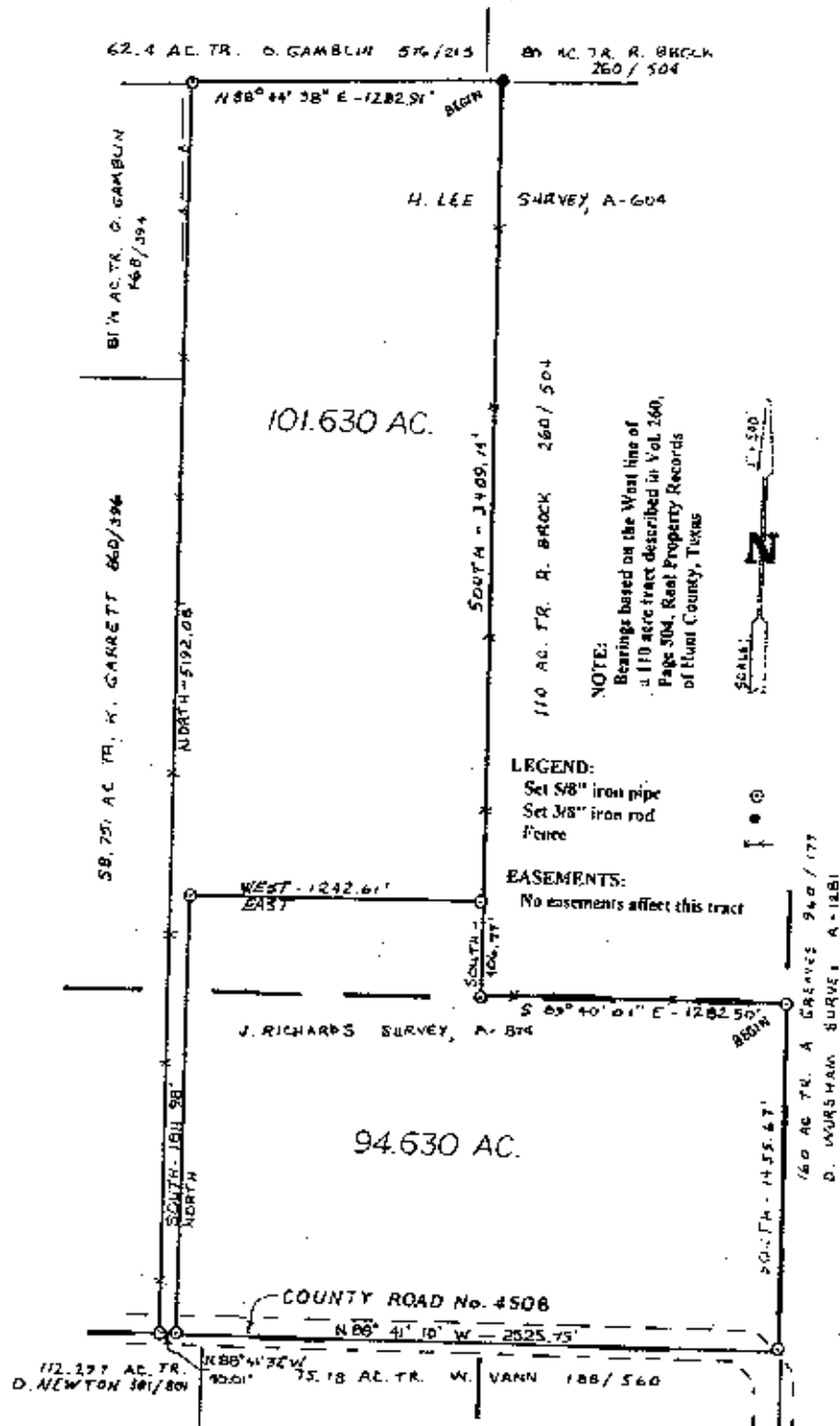


A 94.630 ACRE TRACT IN THE  
 H. S. LEE SURVEY, ABST. NO. 604 AND THE  
 JESSE RICHARDS SURVEY, ABST. NO. 874  
 IN HUNT COUNTY, TEXAS

LYNN SWANNER, INC.



CERTIFICATION:

L. Lynn Swanner, Registered Professional Land Surveyor, do hereby certify that this plat was prepared from a survey made under my supervision during the month of April, 1997.

Signed: *L. Lynn Swanner*  
 Lynn Swanner, R.P.L.S. No. 3806